

Next phase of up-scale condo towers with yoga studio and high-end features coming to Brampton

By [Ryan Rumbolt](#)

Published July 4, 2024 at 12:20 pm



The next phase of a swanky high-rise condo development will bring some 800 new units with luxury features to Brampton, developers say.

Brixen Developments and National Homes have announced the second phase of their DUO condo project located at 245 Steeles Avenue West in Brampton, with a second tower standing 29 stories tall.

Phase 2 builds on the first tower which will be at least 25 stories tall with around 350 units

and amenities including a yoga lawn, a chef's kitchen and private cabanas, and a kid's playroom.

Units range from approximately 500 square foot one-bedroom suites starting at \$628,900 to two-storey, two-bedroom units with over 1,100 square feet of living space at \$1,099,900.

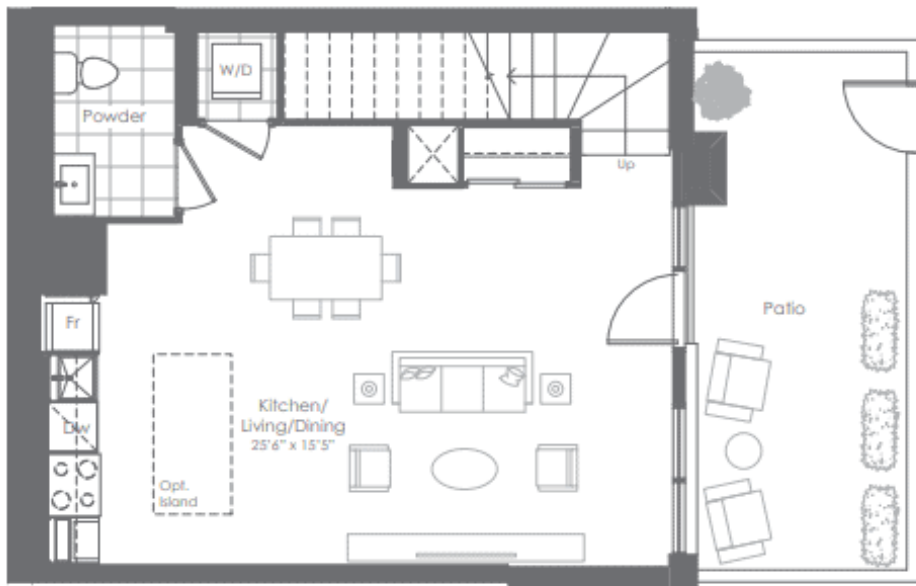
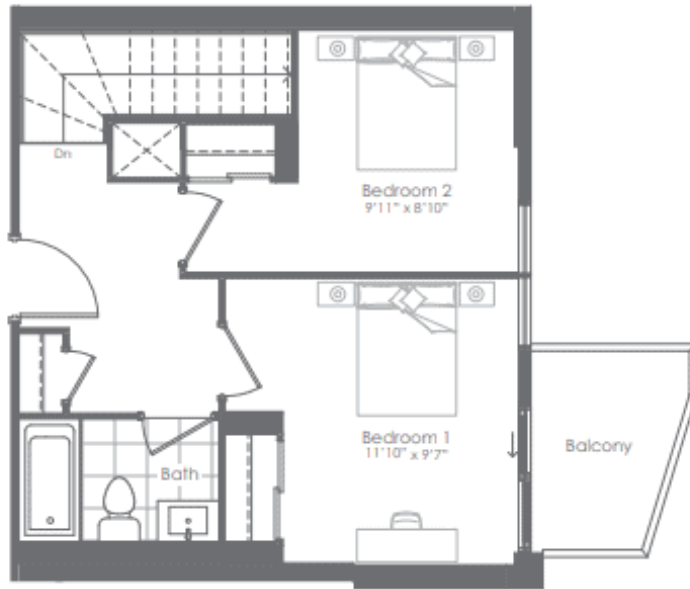
Depending on the unit, the average price per square foot is between \$987 and \$1275.



INTERIOR: 1,114 SF
EXTERIOR: 241 SF
TOTAL: 1,355 SF

2-STOREY SUITES
1,114
2 BEDROOM
2 BATHROOM

Upper Floor



Lower Floor



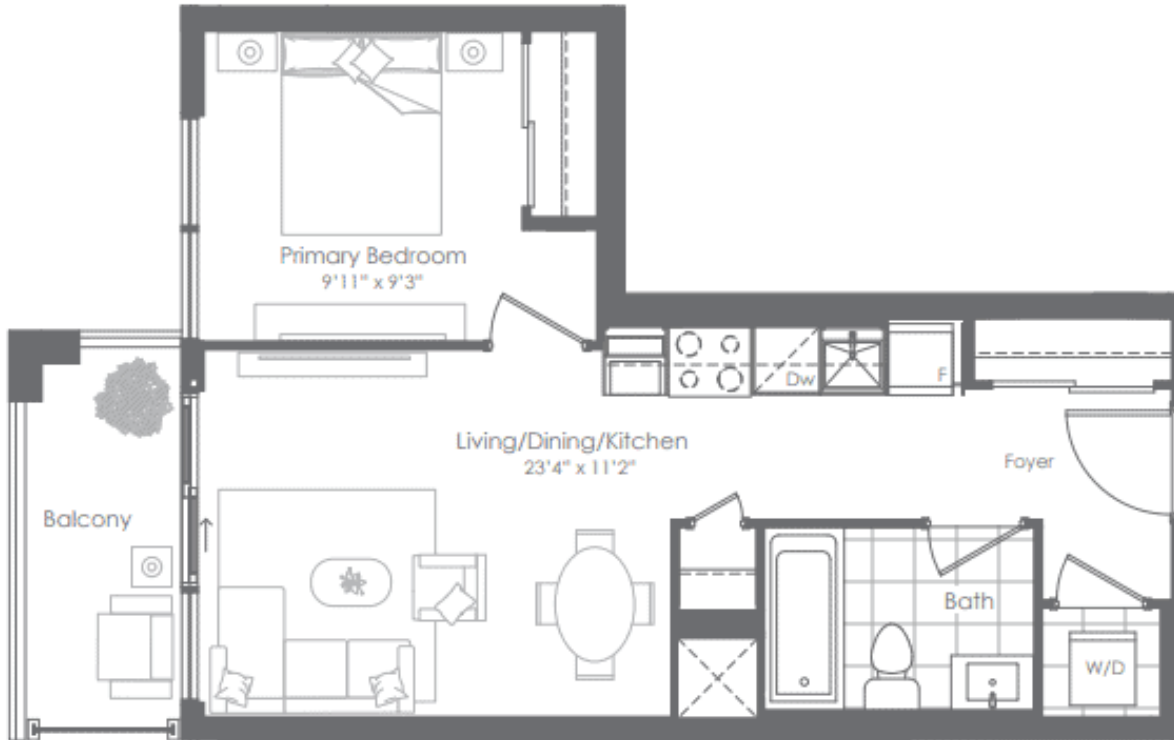
This plan is not to scale and is subject to architectural review and revision. All details are approximate and subject to change without notice in order to comply with building site conditions and municipal, structural, architectural and/or Vendor requirements. Balconies and/or patios, if any, are exclusive use common elements, shown for display purposes only and location, size and design of such are subject to change without notice. Actual unit and/or balcony and/or terrace may be a reverse mirror image of the plan presented. Units may include bulkheads, angled windows and/or angled columns. The location, size and type of windows, view treatments (including frit patterning, mullion/metal panel placement or other visual treatments) and exterior building elements may vary without notice. Suites are sold unfurnished. All illustrations are artist concept only. E & O.E. February 2022
2-STOREY LEVEL SUITE 0105 - THIS





INTERIOR: 518 SF
EXTERIOR: 55 SF
TOTAL: 573 SF

518
1 BEDROOM



This plan is not to scale and is subject to architectural review and revision. All details are approximate and subject to change without notice in order to comply with building site conditions and municipal, structural, architectural and/or Vendor requirements. Balconies and/or terraces, if any, are exclusive use common elements, shown for display purposes only and location, size and design of such are subject to change without notice. Actual unit and/or balcony and/or terrace may be a reverse mirror image of the plan presented. Units may include bulkheads, angled windows and/or angled columns. The location, size and type of windows, view treatments (including frit patterning, mullion/metal panel placement or other visual treatments) and exterior building elements may vary without notice. Suites are sold unfurnished. All illustrations are artist concept only. E & O.E. January 2022
TOWER LEVEL: 1J Floors 9 to 24

NATIONAL
DEVELOPMENT
You are the Developer

BRIXEN
DEVELOPMENTS INC.

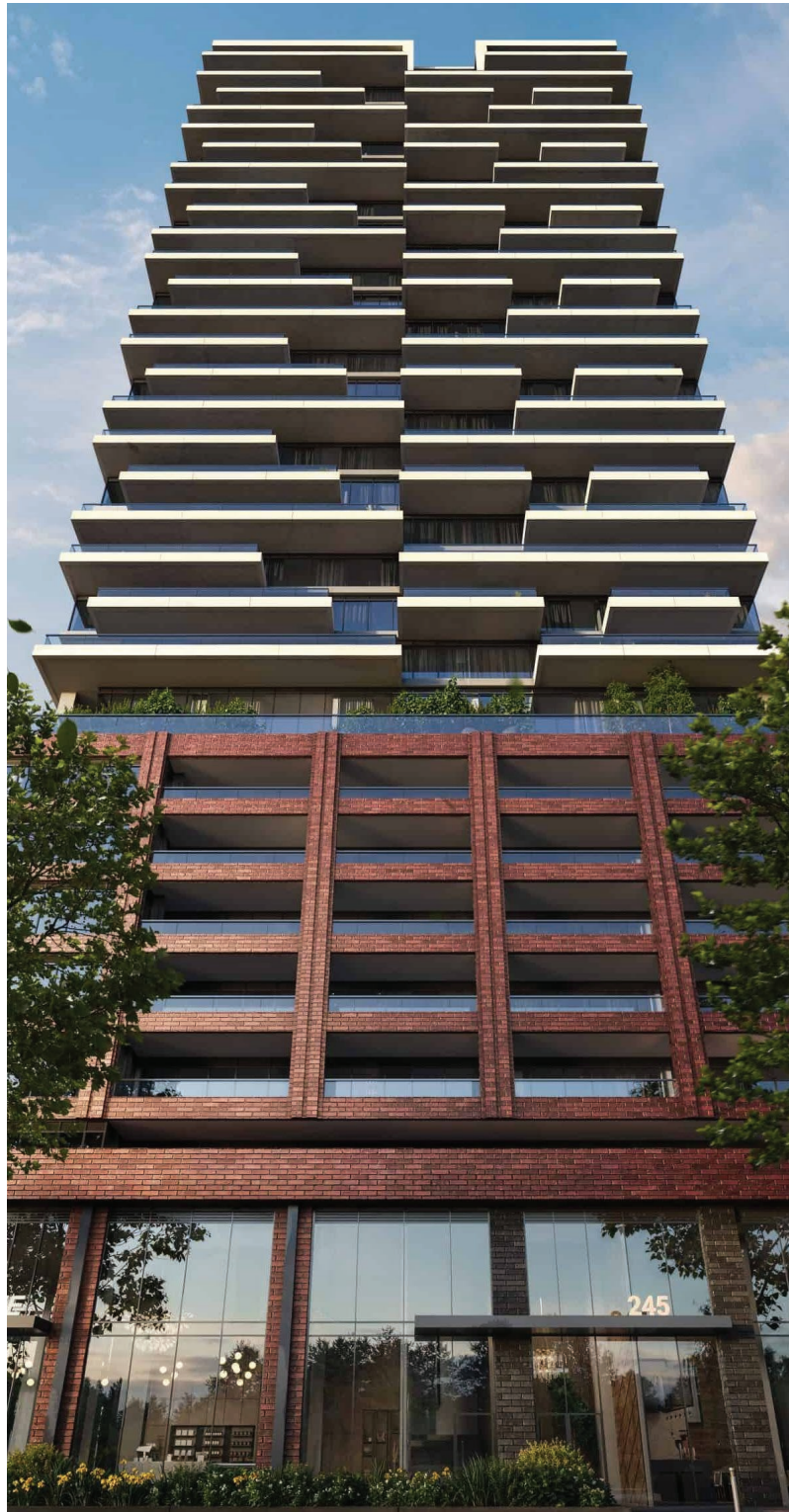
The pair of condo towers will be connected by a ground-level courtyard and a six-storey podium building.

The condos feature a private balcony and 9' ceilings throughout, laminate flooring, quartz kitchen countertops and a stainless steel appliance package including euro-style 24" refrigerator, 30" slide-in smooth top electric range, microwave, hood fan insert and 24" integrated panel-ready dishwasher.

Work on the first tower is already underway with construction expected to finish by the spring of 2025. Phase 1 is already accepting offers while sales for Phase 2 are expected to kick off in the fall with prices starting in the \$400,000s, according to reports.

The development will have a mix of underground and surface parking, with additional building features including a digital and automated parcel locker, 24-hour concierge service, BBQs and a dining area, a rooftop terrace, a fitness studio and a yoga lawn.

The development is also being constructed with the goal of being Leadership in Energy and Environmental Design (LEED) certified.



See article here:

<https://www.insauga.com/next-phase-of-up-scale-condo-towers-with-yoga-studio-and-high-end-features-coming-to-brampton/>